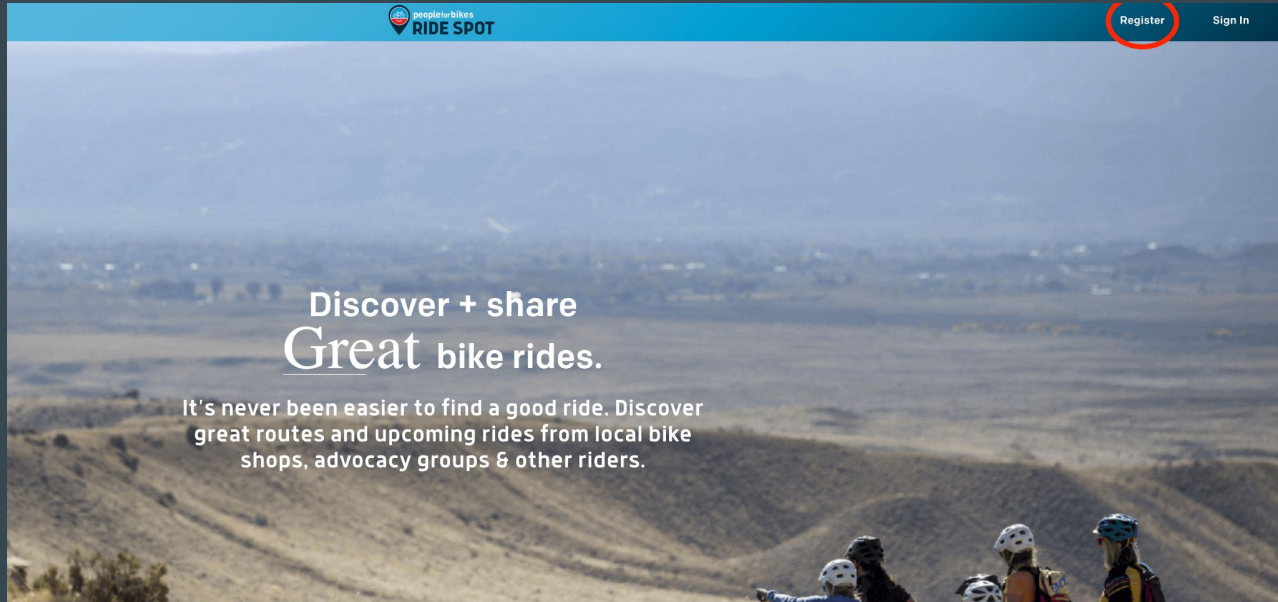


A Quick How To

...

Ride Spot

Visit ridespot.org



Click “Register” in the upper right-hand corner.

Register as an organization

Registration

Ride Spot is designed to help you discover, create and share great biking experiences.

Register for your free account today and download the Ride Spot app to track your rides, get rewarded for riding and connect with your community by bike.

Email

Password

Display name

Confirm password

☐ I Accept the [Terms & Conditions](#) and [Privacy Policy](#)

[Register](#)

To register as an Organization on Ride Spot, [click here.](#)

It's important to register as an organization. If you already created an individual user account, that's great! But, you will need to migrate your routes to an organization account.

Create

The screenshot shows the PeopleForBikes Ride Spot website. The top navigation bar includes 'Create', 'Manage', 'Discover', and 'Learn'. The 'Create' menu is open, showing options for 'Classic route', 'Event', and 'Challenge'. A red arrow points to the 'Classic route' option. The main content area features a profile for 'Gravel City Adventure' with 262 followers, 9 following, and 43 rides. The profile includes store information, hours, and contact details. Below the profile is a featured ride by 'Tobie DePauw' titled 'Evening ride', with a map showing the route. The right sidebar contains sections for 'Featured rides', 'Merchandising', and 'Who to follow'.

Create Manage Discover Learn

Classic route
Event
Challenge

Gravel City Adventure
716 Commercial St, Emporia, KS 66801

Followers 262 Following 9 Rides 43

Store info

About Gravel City Adventure
Our local Emporia shop provides equipment and supplies to our outdoor adventure communities.

Store hours

Day	Hours
Sunday	closed
Monday	11:00am - 7:00pm
Tuesday	11:00am - 7:00pm
Wednesday	11:00am - 7:00pm
Thursday	11:00am - 7:00pm
Friday	11:00am - 7:00pm
Saturday	10:00am - 5:00pm

Store contact

Address
716 Commercial St, Emporia, KS 66801, USA

Featured ride
An EPIC ride

Merchandising

Who to follow
Search riders and affiliates:
PeopleForBikes
Bicycle Garage In...
Summit Bicycles

Tobie DePauw Evening ride
Middleton, Wisconsin, United States, August 30, 2022

Distance 11 mi Elevation 24.1 ft
0 0

Map showing the route.

Click “create” in the upper left-hand corner and then classic route.

Create

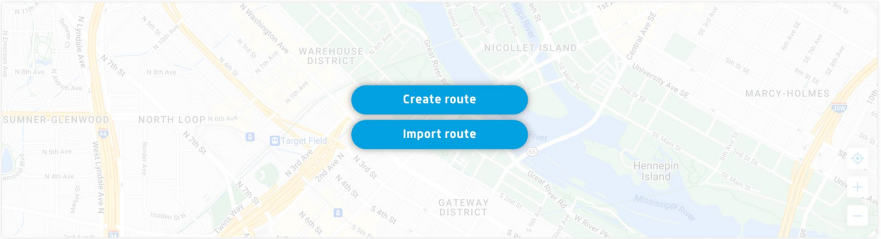
Classic route

Classic name

Write name of classic route

Ride category

Paved



Ride story

You can rearrange the sections below.

Add text

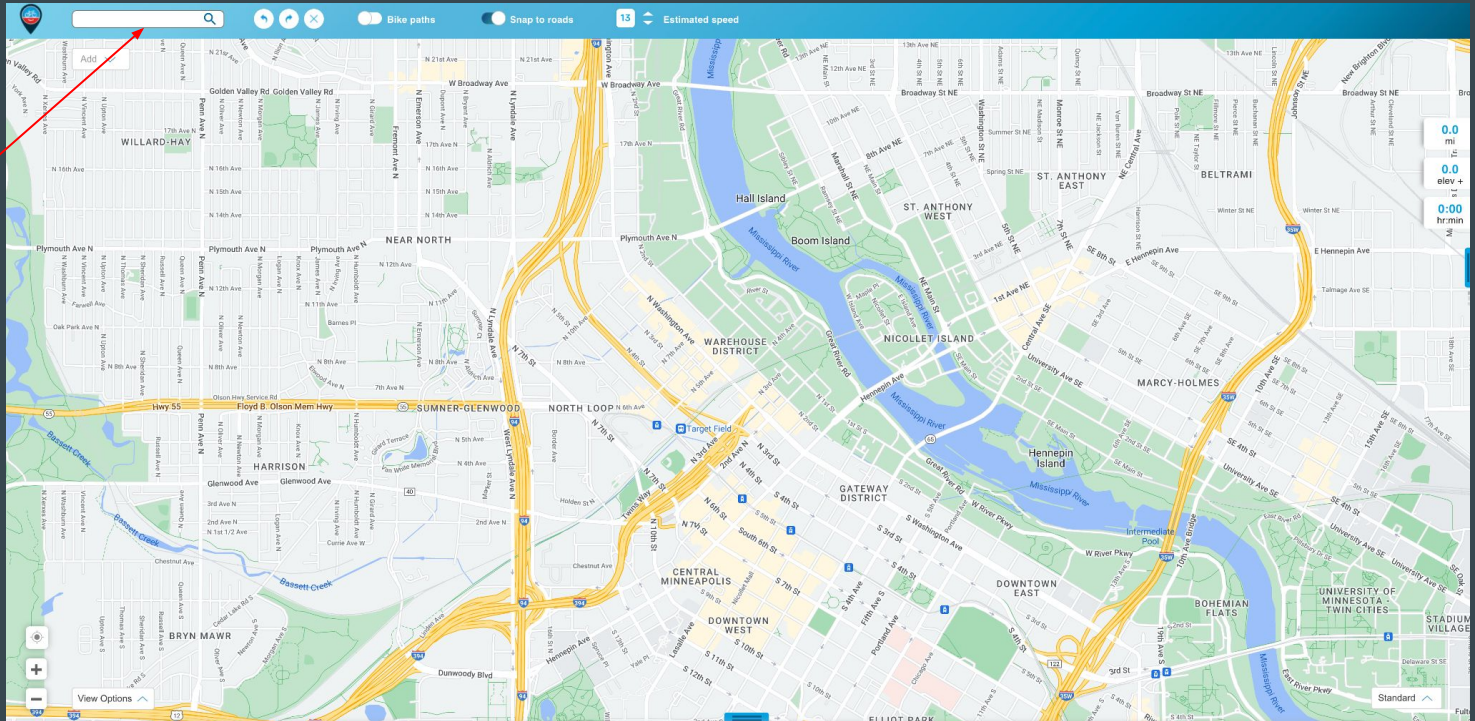
Add quote

Add photos

Save

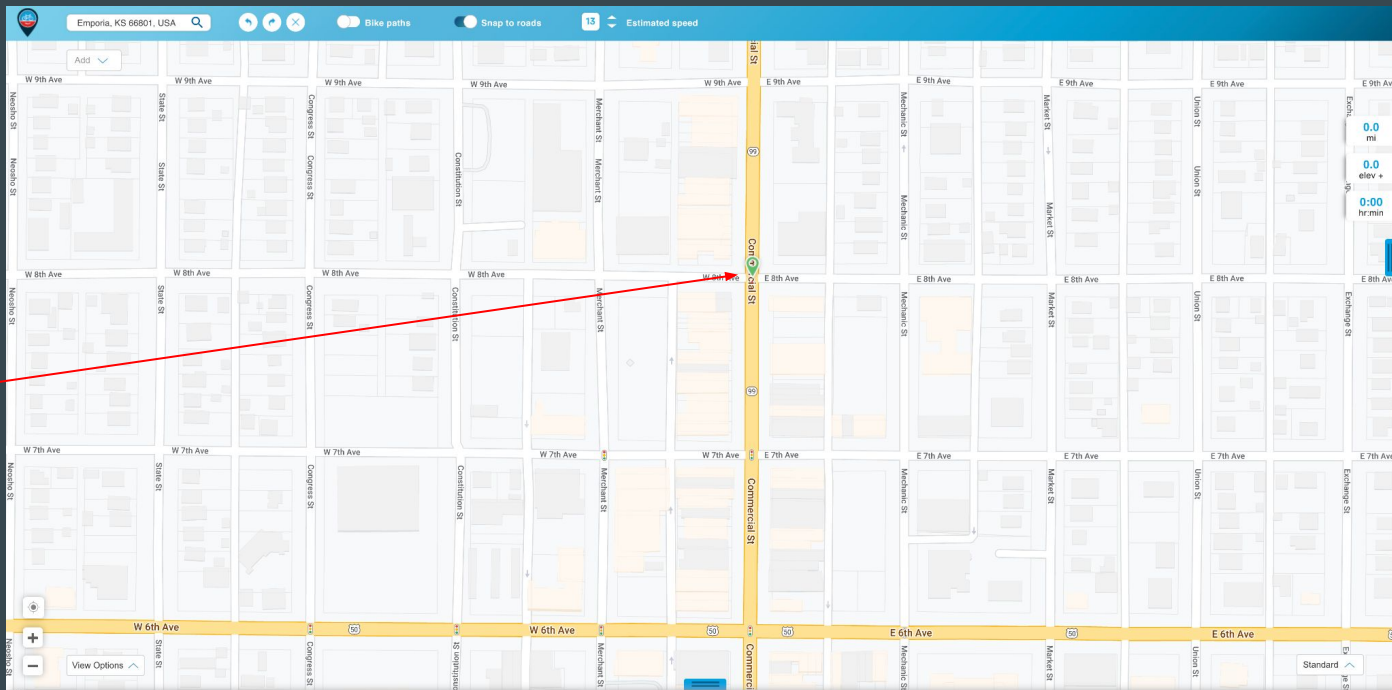
I would encourage you to draw the routes rather than import existing.

Create



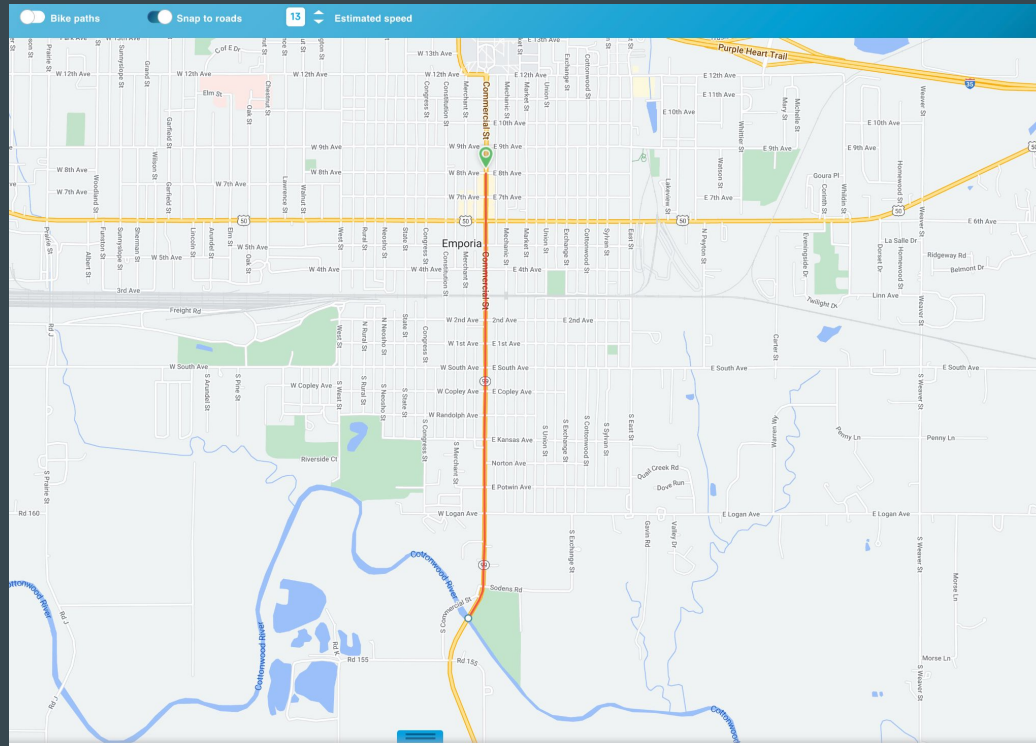
Start by searching for your community in the upper left-hand corner.

Create



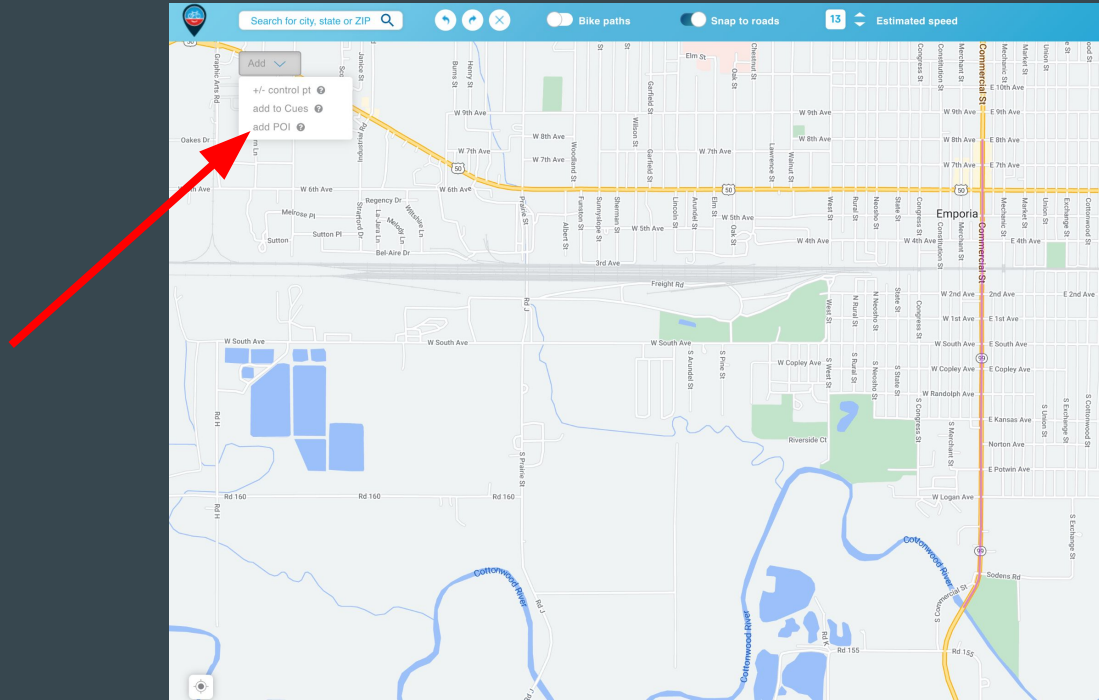
Begin your route by clicking at your desired start location.

Create



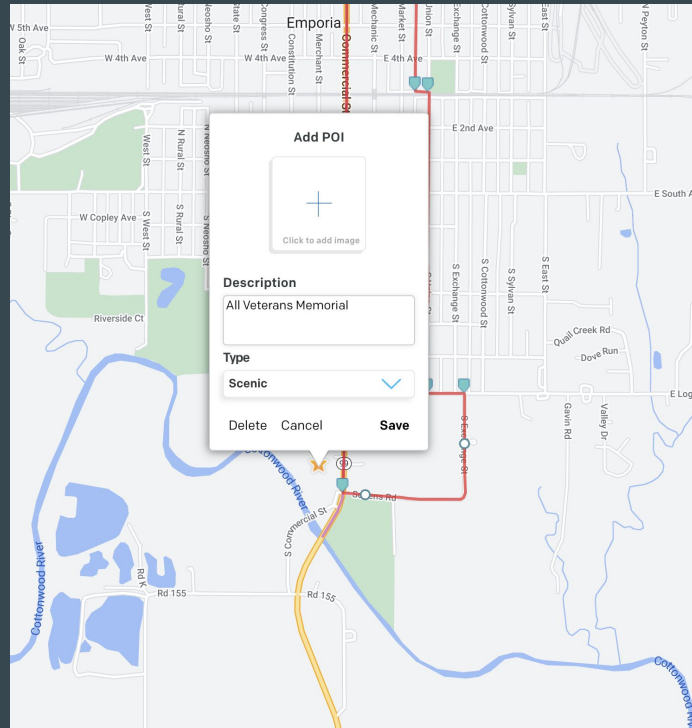
Click another point along your desired route and a red line will appear, which indicates your route. Be careful not to errantly click in driveways, dead-ends, or other spots that aren't meant to be on the route.

Create



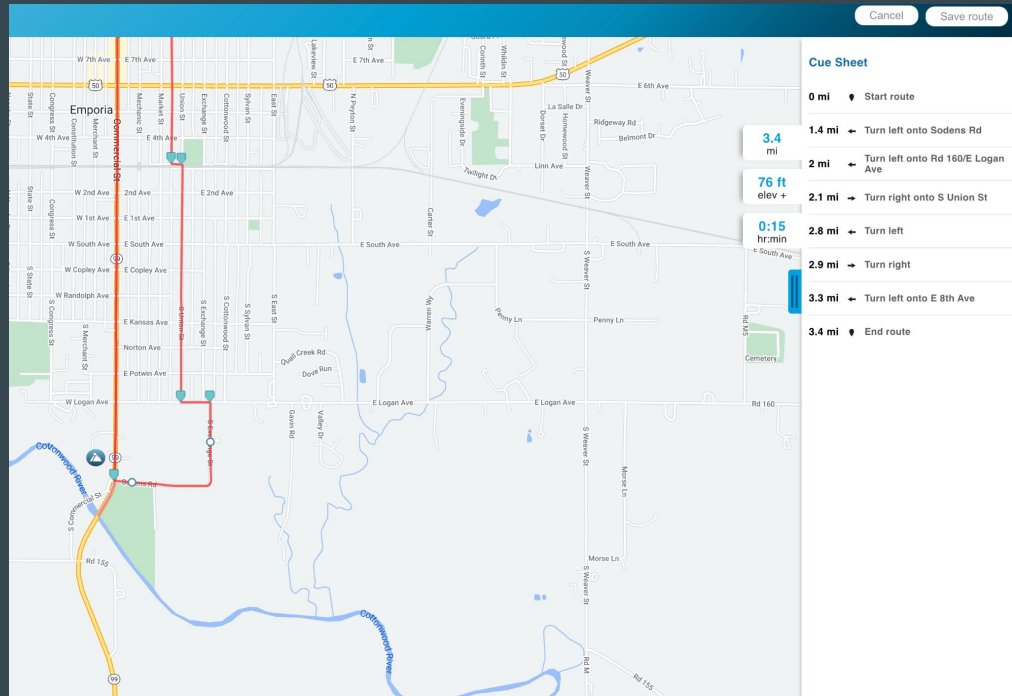
After you have drawn your route, you can add points of interest along the route. Click the “add” button in the upper-left hand corner of the map window. Then click on “add POI.”

Create




Select the point on the map where the Point of Interest is and then fill in the information. I encourage you to take the time to add a photo and provide a description as this will convey more information to the user and make it more attractive. Points of Interest can be many things, attractions along the way, restaurants, gas stations, etc. You can even call attention to the CVB or other buildings you want them to be aware of.

Create



Once your route is complete, and you have added all your points of interest and caution (it's nice to call out RR and dangerous highway crossings), you can save your route by hitting “save route” in the upper right-hand corner.

Create

 **RIDE SPOT**

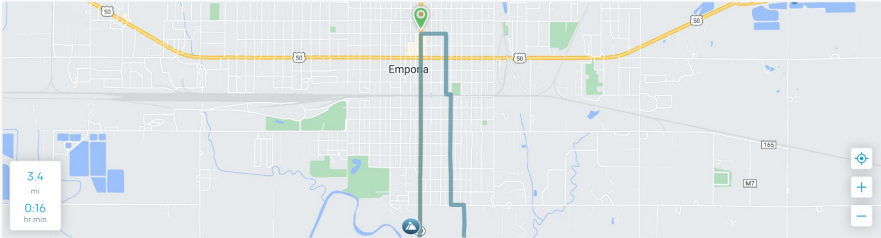
Classic route

Classic name

Write name of classic route

Ride category

Paved



Ride story

You can rearrange the sections below.

Add text

Add quote

Add photos

Save

From here you can name your route, add your route story, and include photos. Hit save at the bottom of the screen and you're done!

It's that easy!

Once you have completed your route, please send me the link. Let me know if you have any questions!

lelan@visitemporia.com